

BEE 4750 Homework 4: Linear Programming and Capacity Expansion

2025-06-12

Due Date

Thursday, 11/07/23, 9:00pm

Overview

Instructions

- Problem 1 asks you to formulate and solve a resource allocation problem using linear programming.
- Problem 2 asks you to formulate, solve, and analyze a standard generating capacity expansion problem.
- Problem 3 (5750 only) asks you to add a CO₂ constraint to the capacity expansion problem and identify changes in the resulting solution.

Load Environment

The following code loads the environment and makes sure all needed packages are installed. This should be at the start of most Julia scripts.

```
import Pkg
Pkg.activate(@__DIR__)
Pkg.instantiate()
```

```

using JuMP
using HiGHS
using DataFrames
using Plots
using Measures
using CSV
using MarkdownTables

```

Problems (Total: 50/60 Points)

Problem 1 (20 points)

A farmer has access to a pesticide which can be used on corn, soybeans, and wheat fields, and costs \$70/kg-yr to apply. The crop yields the farmer can obtain following crop yields by applying varying rates of pesticides to the field are shown in Table 1.

Table 1: Crop yields from applying varying pesticide rates for Problem 1.

Application Rate (kg/ha)	Soybean (kg/ha)	Wheat (kg/ha)	Corn (kg/ha)
0	2900	3500	5900
1	3800	4100	6700
2	4400	4200	7900

The costs of production, *excluding pesticides*, for each crop, and selling prices, are shown in Table 2.

Table 2: Costs of crop production, excluding pesticides, and selling prices for each crop.

Crop	Production Cost (\$/ha-yr)	Selling Price (\$/kg)
Soybeans	350	0.36
Wheat	280	0.27
Corn	390	0.22

Recently, environmental authorities have declared that farms cannot have an *average* application rate on soybeans, wheat, and corn which exceeds 0.8, 0.7, and 0.6 kg/ha, respectively. The farmer has asked you for advice on how they should plant crops and apply pesticides to maximize profits over 130 total ha while remaining in regulatory compliance if demand for each crop (which is the maximum the market would buy) this year is 250,000 kg?

In this problem:

- Formulate a linear program for this resource allocation problem, including clear definitions of decision variable(s) (including units), objective function(s), and constraint(s) (make sure to explain functions and constraints with any needed derivations and explanations). **Tip: Make sure that all of your constraints are linear.**
- Implement the program in JuMP.jl and find the solution. How many ha should the farmer dedicate to each crop and with what pesticide application rate(s)? How much profit will the farmer expect to make?
- The farmer has an opportunity to buy an extra 10 ha of land. How much extra profit would this land be worth to the farmer? Discuss why this value makes sense and whether you would recommend the farmer should make the purchase.

Problem 2 (30 points)

For this problem, we will use hourly load (demand) data from 2013 in New York's Zone C (which includes Ithaca). The load data is loaded and plotted below in Figure 1.

```
# load the data, pull Zone C, and reformat the DataFrame
NY_demand = DataFrame(CSV.File("data/2013_hourly_load_NY.csv"))
rename!(NY_demand, :Time Stamp => :Date)
demand = NY_demand[:, [:Date, :C]]
rename!(demand, :C => :Demand)
demand[:, :Hour] = 1:nrow(demand)

# plot demand
plot(demand.Hour, demand.Demand, xlabel="Hour of Year", ylabel="Demand
↪ (MWh)", label=:false)
```

Table 3: Generator type data, including fixed costs ($/MWh_{installed}$), variable costs ($/MWh$ generated), and CO₂ emissions intensity (tCO₂/MWh generated).

	Plant	FixedCost	VarCost	Emissions
	String15	Int64	Int64	Float64
1	Geothermal	450000	0	0.0
2	Coal	220000	24	1.0
3	NG CCGT	82000	30	0.43
4	NG CT	65000	40	0.55
5	Wind	91000	0	0.0
6	Solar	70000	0	0.0

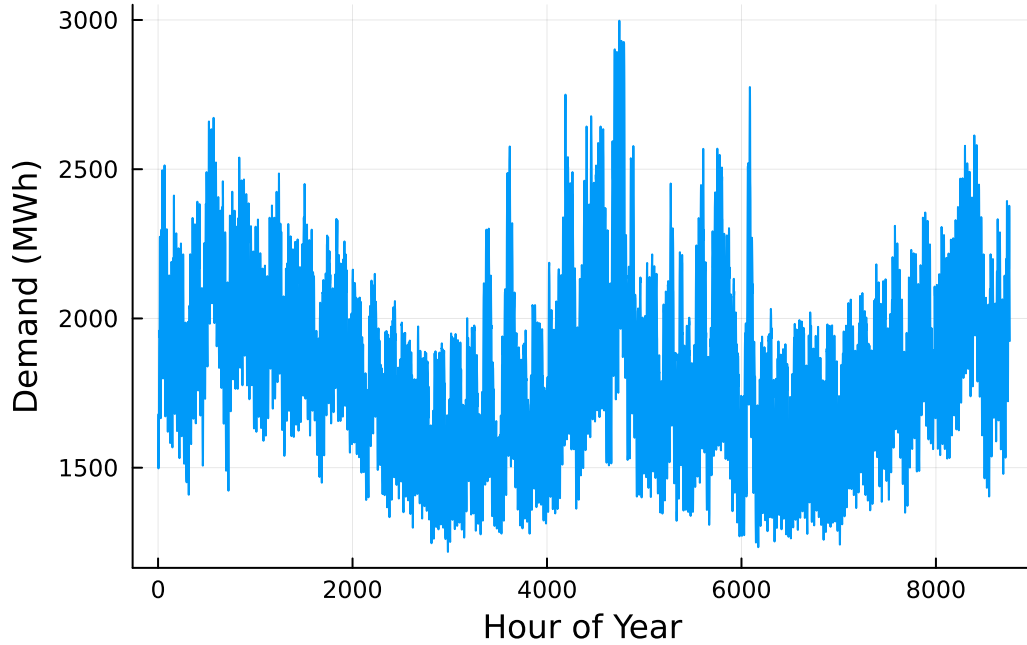


Figure 1: Hourly load data for New York's Zone C in 2013.

Next, we load the generator data, shown in Table 3. This data includes fixed costs (\$/MW installed), variable costs (\$/MWh generated), and CO₂ emissions intensity (tCO₂/MWh generated).

```
gens = DataFrame(CSV.File("data/generators.csv"))
```

Finally, we load the hourly solar and wind capacity factors, which are plotted in Figure 2. These tell us the fraction of installed capacity which is expected to be available in a given hour

for generation (typically based on the average meteorology).

```
# load capacity factors into a DataFrame
cap_factor = DataFrame(CSV.File("data/wind_solar_capacity_factors.csv"))

# plot January capacity factors
p1 = plot(cap_factor.Wind[1:(24*31)], label="Wind")
plot!(cap_factor.Solar[1:(24*31)], label="Solar")
xaxis!("Hour of the Month")
yaxis!("Capacity Factor")

p2 = plot(cap_factor.Wind[4344:4344+(24*31)], label="Wind")
plot!(cap_factor.Solar[4344:4344+(24*31)], label="Solar")
xaxis!("Hour of the Month")
yaxis!("Capacity Factor")

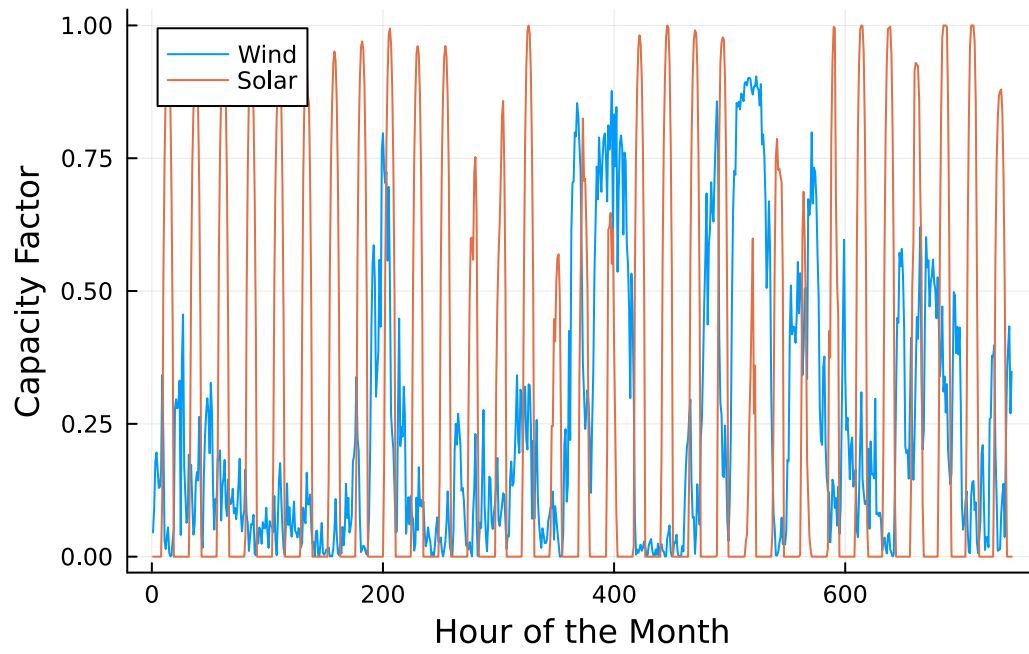
display(p1)
display(p2)
```

You have been asked to develop a generating capacity expansion plan for the utility in Riley County, NY, which currently has no existing electrical generation infrastructure. The utility can build any of the following plant types: geothermal, coal, natural gas combined cycle gas turbine (CCGT), natural gas combustion turbine (CT), solar, and wind.

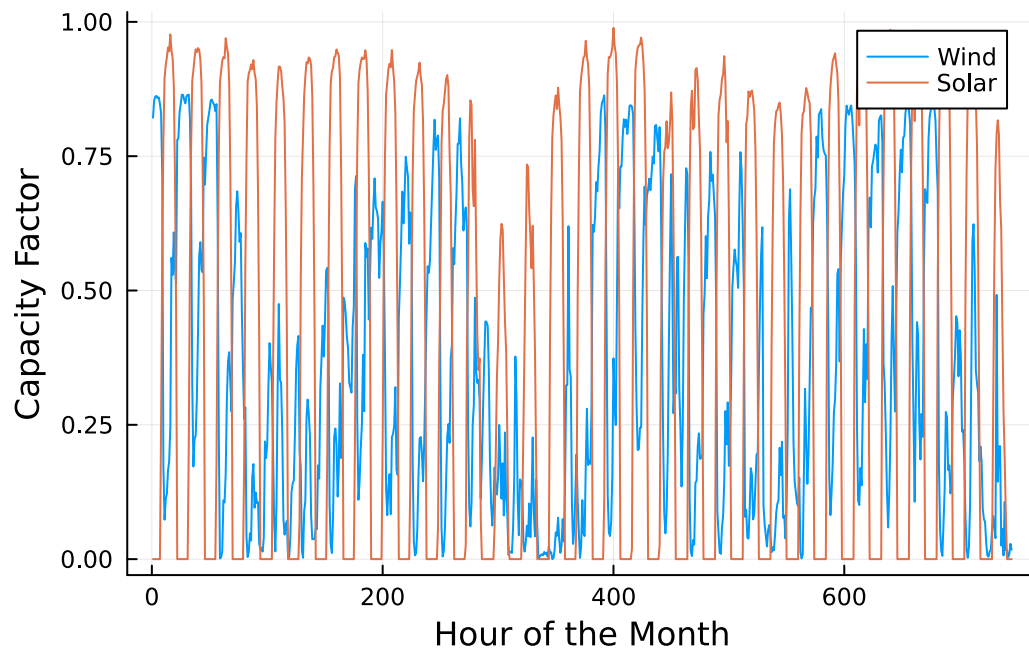
While coal, CCGT, and CT plants can generate at their full installed capacity, geothermal plants operate at maximum 85% capacity, and solar and wind available capacities vary by the hour depend on the expected meteorology. The utility will also penalize any non-served demand at a rate of \$10,000/MWh.

In this problem:

- Formulate a linear program for this capacity expansion problem, including clear definitions of decision variable(s) (including units), objective function(s), and constraint(s) (make sure to explain functions and constraints with any needed derivations and explanations).
- Implement your linear program in JuMP.jl. Find the optimal solution. How much should the utility build of each type of generating plant? What will the total cost be? How much energy will be non-served?
- What fraction of annual generation does each plant type produce? How does this compare to the breakdown of built capacity that you found in Problem 1.5? Do these results make sense given the generator data?
- Make a plot of the electricity price in each hour. Discuss any trends that you see.



(a) January



(b) July

Figure 2: Hourly solar and wind capacity factors.

💡 Significant Digits

Use `round(x; digits=n)` to report values to the appropriate precision! If your number is on a different order of magnitude and you want to round to a certain number of significant digits, you can use `round(x; sigdigits=n)`.

💡 Getting Variable Output Values

`value.(x)` will report the values of a JuMP variable `x`, but it will return a special container which holds other information about `x` that is useful for JuMP. This means that you can't use this output directly for further calculations. To just extract the values, use `value.(x).data`.

💡 Suppressing Model Command Output

The output of specifying model components (variable or constraints) can be quite large for this problem because of the number of time periods. If you end a cell with an `@variable` or `@constraint` command, I *highly* recommend suppressing output by adding a semi-colon after the last command, or you might find that your notebook crashes.

Problem 3 (10 points)

This problem is only required for students in BEE 5750.

The NY state legislature is considering enacting an annual CO_2 limit, which for the utility would limit the emissions in its footprint to 1.5 MtCO_2/yr .

In this problem:

- Reformulate your linear program from Problem 2 with any necessary changes to capture the CO_2 limit.
- Implement the new optimization problem and find the optimal solution. How much should the utility build of each type of generating plant? What is different from your plan from Problem 1? Do these changes make sense?
- What would the value to the utility be of allowing it to emit an additional 1000 tCO_2/yr ? An additional 5000?

References

List any external references consulted, including classmates.